



2026 NTA Program

NAUTILUS TRAINING ALLIANCE

CAPABILITY DEVELOPMENT
FOR THE ENERGY SECTOR



CAPABILITY AND COMPETENCY DEVELOPMENT FOR THE ENERGY SECTOR

Our portfolio, offered at all experience levels, covers the entire breadth and depth of the energy mix. Our faculty of independent expert instructors come from a wide variety of technical background and regional experience that allows Tetra Tech RPS Energy to bring world class expertise to address your skills and training requirements.

Choose from the wide range of courses, in various subject areas and disciplines, learn best practices, and gain hands-on experience that will improve performance.

Geosciences | Multi-disciplinary
Reservoir & Production Engineering
Drilling & Well Engineering | Energy Transition

Delivered virtually, in the field, in the classroom and by self-paced e-learning



Virtual

Virtual instructor led courses timetabled to provide a globally accessible program.



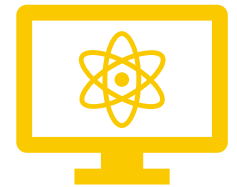
Field

Field courses in the US, UK, Ireland, Spain, Greece, France and South Africa.



Classroom

Courses including core workshops and workstation based courses.



Self-paced

Flexible, competency-based on-line courses taken at individual learners own pace.



Nautilus Training Alliance

A program of competency-based scheduled training courses for energy professionals focusing on core skills development and current challenges facing the energy industry.

Delivering 'best in class' field, classroom and online courses - Led by instructors recognised as world class subject matter experts in their field, including industry leaders, professors and distinguished lecturers.

Modern user environment - Through the Learning Hub, our custom online learning platform, we have developed a modular architecture to enable delivery that meets the expectations of modern learners.

Content steering - Ability to influence technical and non-technical program content.

Commercial flexibility - A range of benefits to enhance membership pre-commitment and deliver greater value.



Geosciences | Engineering Multi-disciplinary | Energy Transition

Detailed and practical training offered at all experience levels,
covering the entire breadth and depth of the energy mix

Subject Areas

- Basin Analysis
- Structure & Tectonics
- Stratigraphy & Sedimentology
- Geophysics & Seismic Interpretation
- Petrophysics
- Reservoir Development
- Unconventional Resources
- Data Analytics, Economics & Risk Analysis
- Petroleum Engineering
- Carbon Capture & Storage



BASIN ANALYSIS

Instructor Led Training

| Courses | Instructors | Level | Mode | Duration | Dates | Location |
|--|--------------|------------|-----------|----------|-----------------|-------------------|
| N598a26C: Geochemistry, Petroleum Systems Modelling, and Charge Evaluation | Leon Dzou | Skilled | Classroom | 5 Days | 18 May - 22 May | Houston, USA |
| N683a26C: Prospect Evaluation, Risks and Volumes | Jan de Jager | Foundation | Classroom | 4 Days | 12 Oct - 15 Oct | Stavanger, Norway |

Self-paced e-learning

| Courses | Level | Duration |
|--|------------|----------|
| EC022 Basin Analysis | Foundation | 8 hours |
| EC020 Petroleum Generation and Migration | Foundation | 5 hours |
| EC021 Play Fairway Analysis | Foundation | 6 hours |



STRUCTURE & TECTONICS

Instructor Led Training

| Courses | Instructors | Level | Mode | Duration | Dates | Location |
|---|----------------------------|------------|-----------|----------|-----------------|------------------------------|
| N379a26F: Application of Structural Geology and Geomechanics to Reservoir Characterization, Management and Hydraulic Stimulation (Wyoming, USA) | Peter Hennings, Jon Olson | Skilled | Field | 5 Days | 10 Aug - 14 Aug | Wyoming, USA |
| N074a26F: Geological and Seismic Interpretation of Thrust Structures for Exploration and Reservoir Characterization (Montana, USA) | Peter Hennings | Skilled | Field | 5 Days | 14 Sep - 18 Sep | Montana, USA |
| N266a26F: Mechanical Stratigraphy, Stress, and Geomechanics (West Texas, USA) | Kevin Smart, Adam Cawood | Skilled | Field | 5 Days | 05 Oct - 09 Oct | West Texas, USA |
| N575a26F: From Sub Seismic Faults to Rift Basins: Exploration, Appraisal, and Production Insights (Gulf of Corinth, Greece) | Douglas Paton | Skilled | Field | 5 Days | 05 Oct - 09 Oct | Gulf of Corinth, Greece |
| N407a26F: Predicting Reservoir and Petroleum Systems in Rifts and Extensional Basins (New Mexico & Colorado, USA) | Lee Krystinik | Skilled | Field | 5 Days | 12 Oct - 16 Oct | New Mexico and Colorado, USA |
| N114a26F: Extensional Tectonics and Normal Faulting (Nevada and California, USA) | David Ferrill, Adam Cawood | Skilled | Field | 5 Days | 19 Oct - 23 Oct | Nevada and California, USA |
| N657a26C: Seismic Structural Interpretation Techniques | Douglas Paton | Foundation | Classroom | 5 Days | 16 Nov - 20 Nov | Stavanger, Norway |
| N477a26C: A Systematic Approach to Defining and Evaluating Stratigraphic and Subtle Combination Traps | Mark Thompson, Mike Mayall | Skilled | Classroom | 4 Days | 30 Nov - 03 Dec | London, UK |

Self-paced e-learning

| Courses | Level | Duration |
|---|------------|-----------|
| EC052 Geomechanics for Oil and Gas Projects | Foundation | 6 hours |
| EC053 Geomechanics for Geothermal Projects | Foundation | 4 hours |
| EC054 Geomechanics for Gas Storage Projects | Foundation | 4 hours |
| EC038 Tectonics and Structural Geology (Available Q2 2026) | Foundation | TBC hours |

STRATIGRAPHY & SEDIMENTOLOGY

Instructor Led Training



| Courses | Instructors | Level | Mode | Duration | Dates | Location |
|---|------------------------------------|------------|-----------|------------|-----------------|-----------------------------|
| N483a26C: Deepwater Stratigraphy and Facies Analysis from Seismic, Well Data and Outcrops | Mike Mayall | Skilled | Classroom | 3 Days | 02 Jun - 04 Jun | Stavanger, Norway |
| N073a26V: Integration of Sedimentology, Petrophysics and Seismic Interpretation for Exploration and Production of Carbonate Systems | Gregor Eberli | Skilled | Virtual | 8 Sessions | 08 Jun - 18 Jun | Virtual Classroom |
| N011a26F: High Resolution Sequence Stratigraphy: Reservoir Applications (Utah, USA) | Lee Krystinik, Andy Pulham | Skilled | Field | 5 Days | 14 Sep - 18 Sep | Utah, USA |
| N059a26F: Carbonate Systems and Facies Architecture: Exploration and Reservoir Implications (Mallorca & Menorca, Spain) | Juan Ignacio Baceta, Guillem Mateu | Skilled | Field | 5 Days | 21 Sep - 25 Sep | Mallorca and Menorca, Spain |
| N042a26F: Reservoir Sedimentology and Stratigraphy of Coastal and Shelfal Successions: Deltas, Shorelines and Origins of Isolated Sandstones (NW Colorado, USA) | Andy Pulham, Lee Krystinik | Skilled | Field | 5 Days | 28 Sep - 02 Oct | NW Colorado, USA |
| N751a26F: Deep-Water Clastic Depositional Systems in a Source-to-Sink Context (Pyrenees, Spain) | Rene Jonk | Skilled | Field | 5 Days | 12 Oct - 16 Oct | Pyrenees, Spain |
| N442a26F: Reservoir Architecture of Deepwater Systems (California, USA) | Rene Jonk | Skilled | Field | 5 Days | 02 Nov - 06 Nov | California, USA |
| N670a26F: Fluvial and Coastal Clastic Depositional Environments (Texas Gulf Coast, USA) | Anton Wroblewski | Foundation | Field | 4 Days | 09 Nov - 12 Nov | Texas Gulf Coast, USA |



STRATIGRAPHY & SEDIMENTOLOGY

Self-paced e-learning

| Courses | Level | Duration |
|---|------------|-----------|
| EC040 Clastic Reservoir Sedimentology | Foundation | 12 hours |
| EC039 Stratigraphic Methods and Sequence Stratigraphy | Foundation | 9 hours |
| EC023 Carbonate Sedimentology (Available Q2 2026) | Foundation | TBC hours |



GEOPHYSICS & SEISMIC INTERPRETATION

Instructor Led Training

| Courses | Instructors | Level | Mode | Duration | Dates | Location |
|--|----------------|------------|-----------|------------|-----------------|-------------------|
| N072a26C: Workshop in Integrated Geological and Geophysical Interpretation of Deep Marine Deposits | Lesli Wood | Skilled | Classroom | 3 Days | 02 Jun - 04 Jun | Houston, USA |
| N659a26V: The Interpreter's Guide to Depth Imaging | Scott MacKay | Skilled | Virtual | 4 Sessions | 21 Sep - 24 Sep | Virtual Classroom |
| N673a26C: Applied Seismic Interpretation | Rachel Newrick | Skilled | Classroom | 5 Days | 12 Oct - 16 Oct | Houston, USA |
| N470a26V: AVO Reflectivity, Pre-stack Inversion and Quantitative Seismic Interpretation | Bill Goodway | Skilled | Virtual | 6 Sessions | 20 Oct - 29 Oct | Virtual Classroom |
| N004a26V: The Essentials of Rock Physics and Seismic Amplitude Interpretation | Eleanor Oldham | Foundation | Virtual | 8 Sessions | 02 Nov - 12 Nov | Virtual Classroom |
| N385a26C: Quantitative Reservoir Characterization | Jaap C. Mondt | Skilled | Classroom | 5 Days | 30 Nov - 04 Dec | Stavanger, Norway |

Self-paced e-learning

| Courses | Level | Duration |
|---|------------|-----------|
| EC008 Seismic Methods (Exploration Geophysics - Update available Q2 2026) | Foundation | 5 hours |
| EC050 Reservoir Geophysics (Available Q2 2026) | Foundation | TBC hours |
| EC046 Seismic Interpretation (Available Q2 2026) | Foundation | TBC hours |



PETROPHYSICS

Instructor Led Training

| Courses | Instructors | Level | Mode | Duration | Dates | Location |
|---|----------------|------------|-----------|----------|-----------------|-------------------|
| N054a26C: Petrophysics and Low Resistivity Pay Evaluation for Conventional Reservoirs | David Eickhoff | Skilled | Classroom | 3 Days | 12 May - 14 May | Houston, USA |
| N666a26C: Special Core Analysis | Dr Adam Moss | Skilled | Classroom | 4 Days | 01 Jun - 04 Jun | London, UK |
| N748a26C: Geological Well Log Interpretation | Angel Meso | Foundation | Classroom | 5 Days | 19 Oct - 23 Oct | Houston, USA |
| N528a26C: Petrophysics of Tight and Unconventional Oil Reservoirs | Katerina Yared | Skilled | Classroom | 3 Days | 27 Oct - 29 Oct | Houston, USA |
| N003a26C: Geological Interpretation of Well Logs | Dawn Houliston | Foundation | Classroom | 5 Days | 02 Nov - 06 Nov | Stavanger, Norway |

Self-paced e-learning

| Courses | Level | Duration |
|--|------------|----------|
| EC013 Foundation Petrophysics | Foundation | 5 hours |
| EC014 Petrophysical Tools | Foundation | 10 hours |
| EC042 Advanced Petrophysical Interpretation & Formation Evaluation | Skilled | 7 hours |



RESERVOIR DEVELOPMENT

Instructor Led Training

| Courses | Instructors | Level | Mode | Duration | Dates | Location |
|--|---------------------------|---------|-----------|----------|-----------------|-------------------|
| N444a26C: Development Planning For Mature Fields | Jerry Hadwin | Skilled | Classroom | 3 Days | 16 Jun - 18 Jun | Stavanger, Norway |
| N033a26F: Characterisation, Modelling, Simulation and Development Planning in Deepwater Clastic Reservoirs (Tabernas, Spain) | Mark Bentley, Ed Stephens | Skilled | Field | 5 Days | 21 Sep - 25 Sep | Tabernas, Spain |
| N750a25C: Mature Field Evaluation and Redevelopment | Sharma Dronamraju | Skilled | Classroom | 3 Days | 22 Sep - 24 Sep | Houston, USA |
| N342a26C: Compartmentalization and Connectivity in Sandstone Reservoirs | John Snedden | Skilled | Classroom | 5 Days | 28 Sep - 02 Oct | Houston, USA |
| N576a26F: Reservoir Modelling and the Application of Outcrop Analogues (Utah, USA) | John Howell | Skilled | Field | 5 Days | 28 Sep - 02 Oct | Utah, USA |
| N386a26F: Reservoir Model Design (Pembrokeshire, UK) | Mark Bentley, Ed Stephens | Skilled | Field | 5 Days | 05 Oct - 09 Oct | Pembrokeshire UK |
| N427a26C: Reservoir Model Design | Mark Bentley | Skilled | Classroom | 4 Days | 26 Oct - 29 Oct | Stavanger, Norway |

Self-paced e-learning

| Courses | Level | Duration |
|---|------------|----------|
| EC001 Geostatistics for Reservoir Modelling | Foundation | 6 hours |
| EC024 Reservoir Modelling and Simulation | Foundation | 4 hours |

UNCONVENTIONAL RESOURCES

Instructor Led Training

| Courses | Instructors | Level | Mode | Duration | Dates | Location |
|---|---------------------------------|---------|-----------|----------|-----------------|-----------------|
| N364a26F: Critical Elements of Unconventional and Fractured Reservoirs: Sedimentology, Diagenesis and Mechanical Stratigraphy (California, USA) | Richard Behl, Jon R. Schwalbach | Skilled | Field | 5 Days | 16 Jun - 20 Jun | California, USA |
| N406a26C: Unconventional Resource Assessment and Valuation | Creties Jenkins, Mark McLane | Skilled | Classroom | 4 Days | 24 Aug - 27 Aug | Midland, USA |
| N437a26C: Geomechanics for Unconventional and Tight Reservoirs | Neal Nagel | Skilled | Classroom | 4 Days | 16 Nov - 19 Nov | Houston, USA |

DATA ANALYTICS, ECONOMICS & RISK ANALYSIS

Instructor Led Training

| Courses | Instructors | Level | Mode | Duration | Dates | Location |
|--|-----------------|------------|-----------|------------|-----------------|-------------------|
| N510a26V: Mitigating Bias, Blindness and Illusions in E&P Decision Making | Creties Jenkins | Foundation | Virtual | 4 Sessions | 18 May - 21 May | Virtual Classroom |
| N014a26V: Petroleum Economics and Risk Analysis | Mark Cook | Foundation | Virtual | 5 Sessions | 22 Jun - 26 Jun | Virtual Classroom |
| N345a26C: Next Generation Earth Modeling; Integrating Geostatistics, Geoscience, Engineering, and Data Science | Jeffrey Yarus | Skilled | Classroom | 4 Days | 13 Jul - 16 Jul | Houston, USA |
| N755a26V: Asset Management in the Oil and Gas Industry | Joel Turnbull | Foundation | Virtual | 5 Sessions | 14 Sep - 18 Sep | Virtual Classroom |
| N995a26C: Modelling & Managing Uncertainty in the Subsurface | Pete Smith | Skilled | Classroom | 4 Days | 23 Nov - 26 Nov | Stavanger, Norway |
| N685a26V: E&P Project Cost Estimation and Control | David Newman | Foundation | Virtual | 5 Sessions | 07 Dec - 11 Dec | Virtual Classroom |

Self-paced e-learning

| Courses | Level | Duration |
|---|------------|----------|
| EC055 Geostatistics for the Energy Industry | Foundation | 10 hours |
| EC019 Resource, Risk and Economics Assessment | Foundation | 11 hours |

PETROLEUM ENGINEERING

Instructor Led Training

| Courses | Instructors | Level | Mode | Duration | Dates | Location |
|---|-------------------|------------|-----------|------------|-----------------|-------------------|
| N940a26C: Modern Completion and Production Enhancement Techniques | Jonathan Bellarby | Skilled | Classroom | 5 Days | 22 Jun - 26 Jun | Aberdeen, UK |
| N573a26V: Enhanced Oil Recovery: Techniques, Practices and Simulation | Yucel Akkutlu | Skilled | Virtual | 8 Sessions | 03 Aug - 13 Aug | Virtual Classroom |
| N600a26C: Well Planning and Execution | Christine Telford | Foundation | Classroom | 5 Days | 19 Oct - 23 Oct | Aberdeen, UK |
| N961a26C: Strategic Reservoir Simulation | Karl Stephen | Skilled | Classroom | 5 Days | 09 Nov - 13 Nov | Aberdeen, UK |
| N996a26C: Gas Reservoir Engineering and Management | Pete Smith | Skilled | Classroom | 4 Days | 16 Nov - 19 Nov | Stavanger, Norway |
| N006a26V: An Introduction to Reservoir Engineering for Geoscientists | Mark Cook | Foundation | Virtual | 5 Sessions | 16 Nov - 20 Nov | Virtual Classroom |

Self-paced e-learning

| Courses | Level | Duration |
|---|------------|----------|
| EC025 Well Planning and Drilling Operations | Foundation | 6 hours |
| EC026 Reservoir Engineering and Well Optimisation | Foundation | 3 hours |
| EC027 Well Completion Technology | Foundation | 4 hours |
| EC028 Well Production Operations | Foundation | 3 hours |
| EC036 Delivering Exploration & Appraisal Wells Safely | Foundation | 8 hours |



CARBON CAPTURE & STORAGE

Self-paced e-learning

| Courses | Level | Duration |
|--|------------|----------|
| EC003 Fundamentals of Carbon Capture and Storage (CCS) | Foundation | 4 hours |
| EC004 Geological Storage of CO₂ | Foundation | 4 hours |
| EC005 Behaviour of CO₂ in Reservoirs | Foundation | 6 hours |
| EC006 Monitoring CO₂ Storage | Foundation | 4 hours |
| EC007 Petrophysics for CCS | Skilled | 7 hours |
| EC031 Geomechanics for CCS Projects | Skilled | 6 hours |



COURSE ACCESS

Scheduled courses

We deliver field, classroom and online courses focusing on core skills development and current challenges facing the E&P industry. Courses are delivered by instructors recognised as world class subject matter experts in their field, including industry leaders, professors and distinguished lecturers.

Our scheduled courses can be accessed through your corporate Nautilus Training Alliance (NTA) Membership or courses can be booked on-demand as required online by credit card or invoice.

Self-paced e-learning

Offered independently or as part of a blended learning program, our bespoke e-learning solutions immerse learners in a rich variety of content and interactive media to provide a personalised learning experience. By providing access to the e-learning catalogue or producing custom content, we can help organisations leverage technology to engage their learners in a dynamic and exciting digital learning environment.

With each new course, you will find an overview of what the course covers and what's associated with the specific course elements in the introductory module page. Specific competencies are addressed through videos, presentation materials, interactive quizzes, 3D models, text and voice-overs. Each module is designed for flexible learning and allows for variable periods of interaction with content to suit individual needs.

Courses can be accessed either via a corporate license or can be booked on-demand as required online by credit card or invoice.

Inhouse courses

The same best in class virtual, field and classroom courses focusing on core skills development and current challenges but delivered inhouse for groups typically of 10 to 20 participants. Courses delivered by instructors recognised as world class subject matter experts.

Designed to meet technical requirements – Learning events are tailored to address learning outcomes most relevant to the team in the workplace. Can include variations across all subject areas and specifics to address cross-disciplinary challenges. Established courses can be delivered off-the-shelf or customised to meet specific technical focus and level.

Flexible locations – Either in your office, or virtually to provide training for participants in multiple locations.

Flexible schedules – Delivered in continuous sessions, or distributed over a longer period of time to suit operational requirements.

Efficient - Team focused training is a cost effective means of learning and development for technical staff with shared technical challenges.

Book a course or make an inhouse course enquiry:
energytraining.tetrattech.com/contact-us/



Certificates for Professional Development

Certificates for Professional Development Hours (PDH) and/or Continuing Education Units (CEU) are issued for application toward your professional development.

We are accredited by the International Association for Continuing Education and Training (IACET) and is authorized to issue the IACET CEU. We comply with the ANSI/IACET Standard, which is recognised internationally as a standard of excellence in instructional practices.

[Visit the IACET website](#)

All Geoscience and Professional Skills Development courses on the Nautilus Training Alliance have been accredited by the Geological Society, London and approved for Continuing Professional Development for geoscientists who are working towards or have received Chartered Geologist status.

[Visit the Geological Society of London's website](#)



Our goal is to collaborate with our customers to develop the competencies and capability of their workforce through integrated learning that supports their roles and promotes individual development driving organisational excellence. Our expertise brings flexible and scalable solutions from a diverse energy portfolio in the design, development of technical content and knowledge-based programmes delivered by expert instructors. Our technical and learning expertise help organisations develop the competencies, skills and knowledge they need to fulfil their collective potential.

CONTACT

W: energytraining.tetratech.com

E: rps.energytraininginfo@tetratech.com